

# THE OLYMPIC NEWS

The Monthly Newsletter of the Olympic View Community Church of the Brethren  
tel. 206-525-8900 • www.olympicchurch.org e-mail: info@olympicchurch.org

April 2007

---

## Nourishing Interchanges

“And Jesus had to go through Samaria...”

So begins the story from John, chapter 4 of Jesus and the woman at the well. As you’ll recall, in this fascinating encounter Jesus engages a Samaritan woman in the midst of her chore of fetching water. They talk politics, personal life, and religion, and she gives as well as she gets as the conversation goes along. At the end she returns to her village as the first Christian “missionary” in history: to tell her neighbors that she may have met the Messiah.

In the text, the word “had” bears the connotation of “it was necessary that” or “it was incumbent that”—what was it that so compelled Jesus to go over into this enemy land? Indeed, it seems Jesus never met a boundary he didn’t try to cross—whether into uncharted territory or new relationships. Why? Certainly he saw everyone as a child of God, deserving of his attention and respect. And he had a message that resonated with people of every stripe—and especially on the other

side of the many boundaries we erect.

But Jesus also seemed enriched by these encounters. In this one, when his disciples come back with lunch he tells them he’s not hungry—he has already been nourished by his interchange with this woman.

That’s a big part of what’s behind our Learning Tours. We gain information, share resources, come home to be better advocates for the Gwich’in in the Arctic or the poor in Central America or the war-ravaged in Sudan. But we’ve also been blessed by the relationships we’ve formed and that live on with us after we’ve physically separated.

I guess that’s why we “have” to go—and why we’re also beginning a Partner Community program to link congregations with partners in others countries. These relationships may be good for our neighbors, but they will almost certainly be a blessing to us.

David Radcliff  
New Community Project

---

### The Olympic News

Olympic View Community Church of the Brethren  
425 NE 95th Street  
Seattle, WA 98115

CHANGE SERVICE REQUESTED



*April 2007*



Non-Profit Org. U.S. Postage Paid Seattle, WA Permit # 01259
---

## Shared Prayer Requests

### In our community...

For **Frosty Wilkinson**, undergoing tests for a respiratory problem.

For **Barbara Anderson**, recovering from a fall last week that broke her nose and two fingers.

For **Gloria Sherwood**, recovering from pneumonia.

For **Mike Helmuth's father**, Bill, who is seriously ill.

For **Sharon Haley's** younger brother, undergoing tests, and sister, recovering from surgery.

For **Russell Jarboe**, now receiving hospice care.

For **Jaydine**, a friend of the Skagit Valley Fellowship, going through a difficult divorce.

For our ministry to the sick and homebound, that they may experience caring generosity, healing, and sustenance.

### Ongoing prayer requests:

**The Smith-Derksen family; Elaine Rankin;**

**Mike Titus; Russell Jarboe; Jacob Cochran;**

**Jeff Keuss Sr.; Dick Nash; Richard Shoemaker;**

**Bill Shoemaker's brother; Gene Harnden;**

**Bill Case's daughter, Carol Kamada;**

**Charles Walker; Eileen Birkey's mother;**

**Ernie Ricketts; Tim Bisterfeldt's aunt, Diane Peters;**

**Lew Fortin's nephew, Michael Rogers**

**Mike Helmuth's father, Bill, and nephew,**

**Ryan Halifax; Alvida Fite; Sharon Haley's brother,**

**Mark; Adam Ford**

### In our state, nation & world...

- That we offer a vision of justice, peace, and healing which will form the basis of a bi-partisan commitment in our nation to work together for the common good.
- For a renewed commitment by our leaders to open disarmament talks with Iran.
- For an end to the wars in Iraq and Afghanistan; and for the safety and return of all combatants, and for the difficulties which their families face in their absence.
- For a revitalization of our District churches and a deepening sense of our unity in Christ.
- For safe and peaceful conditions for the people of the Middle East.
- For our ministry for those with limited resources.



## Living Peace Church News & Notes

Focusing on the  
peace & reconciliation  
ministries of the church.  
Greetings from On Earth Peace!

### On Earth Peace Website – A Resource for You!

We want to invite you to explore our website ([www.onearthpeace.org](http://www.onearthpeace.org)) to learn more about On Earth Peace, expand your thinking about being a living peace church, and find great resources for your congregation. Here are just a few of the resources you'll find:

- **Engaging a Difficult Issue** – Looking to Christ as a model, how can we talk about difficult things? This resource provides scriptural thoughts on how to engage a difficult issue:  
[www.onearthpeace.org/EngagingaDifficultIssuebasic](http://www.onearthpeace.org/EngagingaDifficultIssuebasic).
- **Peace and Justice Films** – Want to explore creative nonviolent solutions to the issues we face daily? Check out these films created to speak out against violence and injustice:  
[www.onearthpeace.org/peacefilms.html](http://www.onearthpeace.org/peacefilms.html).
- **Tips for Witness Commissions and Peace Advocates** – Do you want to motivate your congregation for ministries of peace and justice? Here are some suggestions you may find helpful:  
[www.onearthpeace.org/tips-for-witness](http://www.onearthpeace.org/tips-for-witness).
- **Meditative Bible Study** – Are you looking for a way to discern what God is speaking to us through scripture? Here is a group Bible study based upon the contemplative practice of Lectio Divina:  
[www.onearthpeace.org/MeditativeBibleStudy](http://www.onearthpeace.org/MeditativeBibleStudy).
- **Peace Curricula for Youth and Young Adults** – Want some new ideas for Sunday school classes and youth groups? This resource includes ideas from Brethren Press, as well as other denominations:  
[www.onearthpeace.org/suggested-curricula](http://www.onearthpeace.org/suggested-curricula).
- **Getting Connected with Encountering Recruitment** – Are you concerned about military recruitment for young people? Here are some ways to develop a ministry of positive futures for youth:  
[www.onearthpeace.org/get-connected](http://www.onearthpeace.org/get-connected).

We are constantly updating and adding new resources to our website so we hope that you'll visit the site regularly. And if you have any ideas for other resources we might include, let us know.

*On Earth Peace: An agency of the  
Church of the Brethren helping people discern  
the things that make for peace*

P. O. Box 188, New Windsor, MD 21776  
410-635-8704 • [www.brethren.org/oepa](http://www.brethren.org/oepa)

oepa oepa@brethren.org

## GUILD

Guild's next breakfast and program will take place **Wednesday, April 18th, at 7:30 am**. Our group meets on the third Wednesday of each month, September through June. Call the church office—206 525-8900—for information or to leave a message for the group's leader, Grace Edmark.

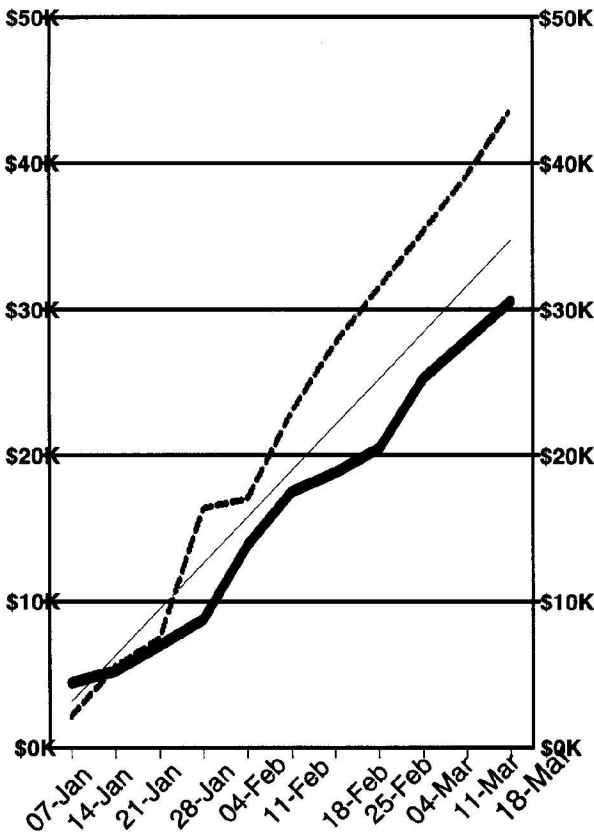
## Deacon News

The monthly Deacon training session has been cancelled for April. The next training session is scheduled for May 22, 2007 at 7:00 pm.

Maundy Thursday Service,  
Lovefeast and Footwashing  
April 5, 2007 6:30 pm

Easter Breakfast  
Served by the Fellowship Team  
April 8, 2007 8:30 am

## 2007 YTD Financial Support for Ministries Olympic View Community Church of the Brethren



— Target Income    — Actual Income    - - Actual Expense

## Attention! Graduates of 2007

If you are to graduate from High School, University, or another phase of your educational career this Spring, please let the office know: we'd like to celebrate with and congratulate you on the first Sunday in June. Did you graduate from a program mid-year? Tell us, so we can congratulate and celebrate you, too!

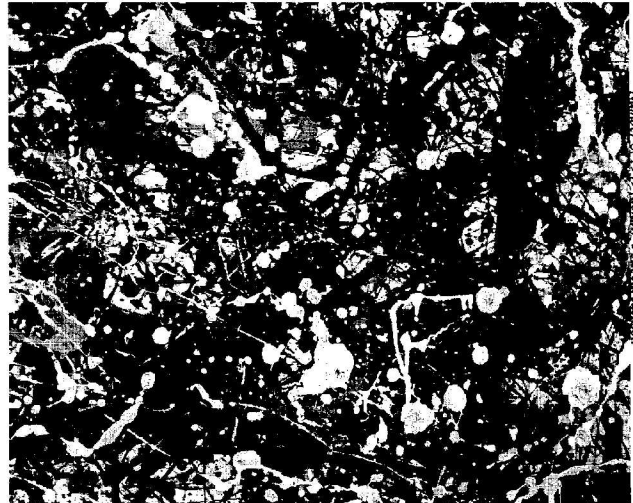
## Please don't miss these important event

*Northaven Annual Corporate Meeting: at Northave  
April 26, 2007 / dinner at 5:00 pm / meeting at 7:00 p  
(For details about meeting, please see Roget Edmark)*

*Annual Conference: held at OVCCoB  
April 29th, 2007 / Starts at 1:00 pm*

## Christine Wilkinson, Featured Soloist

Christine Wilkinson will be the featured soloist for the May 19th Skagit Symphony concert, playing Beethoven's Violin Concerto, at 7:30 pm, McIntyre Hall, Mount Vernon, WA. If you'd like to attend, talk to Frosty, Nancy, or Christine Wilkinson; for tickets, (360) 848-1827.



*Rain reminds me again and again that  
the whole world runs by rhythms I have  
not yet learned to recognize, rhythms that  
are not those of the engineer.*

Thomas Merton

## OLYMPIC VIEW COMMUNITY CHURCH OF THE BRETHREN ANNUAL "MAY AWAY" 2007

### WHEN

MAY 4, 5, & 6, 2007

### WHAT

OVCCoB Annual May Away Retreat

### WHERE

Far-A-Way Retreat House, Archdiocese of Seattle  
6505 Cliff Ave. Road, Longbranch, WA

### WHO

Reserved with deposit as of March 17, 2007 are:  
Jerry and Carol Bowers, Bill and JoAnn Shoemaker, Bob and Carol Landis, Peggy Cochoran, Geraldine Campbell, Patti Berg, Jim and Goldie Barnes, Dennis and Jeanne Rempel, and Roger and Kathy Edmark.

### COST

Only approximate costs can be given. The final costs will be determined by the number of people who attend. We have the entire property reserved. There is room for 26 people. Approximate cost based on 22 people is \$120 per person for 2 nights plus food.

### MEAL PLAN

All dishes, glassware, silverware and pots and pans are provided.

Friday dinner (6pm) **Potluck**

(bring a dish to share)

Saturday breakfast (whenever) **Potluck**

(bring item to share)

Saturday lunch (about noon) **"Stone soup"**

(bring something to add)

Saturday dinner (6pm)

**Baked chicken, baked potato and salad bar**

(bring a piece of chicken, a potato and something to add to the salad bar)

Sunday brunch (9am)

**"impossible quiche"** (provided / leftovers used)

\* *Bring any dessert, drinks or snacks you'll want.*

\* *Provided: Coffee, sweetener, creamer*

### DESCRIPTION

The property is elegantly landscaped and overlooking Filucy Bay on Puget Sound. It is a turn-of-the-century estate that has been renovated to capture the beauty of the original architecture.

Inside high-beamed ceilings, warm furnishings

and stone fireplace give a comfortable feel to the spacious living room. There are 8 bedrooms in the main house and 4 bedrooms in Tender Leaf Manor located a few feet from the side of the main building. Each room has a bible and comes with sheets, towels, and soap. The Chapel in the retreat house is open. No smoking is allowed in the retreat house or in any of the rooms. Guest rooms do not have phones, but there is one available in the kitchen. There are 4 acres for walking, a beautiful beach, a hot tub, fully equipped kitchen, and big screen TV.

### DIRECTIONS

- \* Take I-5 south to the Bremerton exit and cross the Narrows Bridge toward Bremerton Hwy. 16.
- \* Go past Gig Harbor to Purdy Exit on the right side of the freeway.
- \* In Purdy, go to the intersection of Hwy. 302, then turn left at intersection (at the light next to the shopping area). Go west toward Key Center.
- \* Follow Fwy. 302 18 miles through Key center. Go through tiny community of Home and straight on through Longbranch.
- \* Fwy. 302 turns into Key Peninsula Hwy. One mile past Longbranch, turn left on 72<sup>nd</sup> street. Go past stop sign at foot of hill and through dead end signs. At boat ramp, 72<sup>nd</sup> turns left and becomes Cliff Ave. Road. Go north on Cliff Ave. Road about a mile.
- \* Pass more dead end signs, then 'Far-A-Way' is on the left.

---

## Olympic View Book Club

*Time:* the club will meet at 10:30 am

*Date:* Friday, April 27, 2007

*Place:* Scheduled for Olive White's home

*Book to read:* Broken For You, Kallos

**The Olympic News** is published monthly (mostly)  
By The Olympic View Community  
Church of the Brethren

425 NE 95th Street, Seattle, WA 98115  
Phone: 206-525-8900 Fax: 206-525-1574  
[www.olympicchurch.org](http://www.olympicchurch.org)  
e-mail: [info@olympicchurch.org](mailto:info@olympicchurch.org)

**We welcome you to our services.**